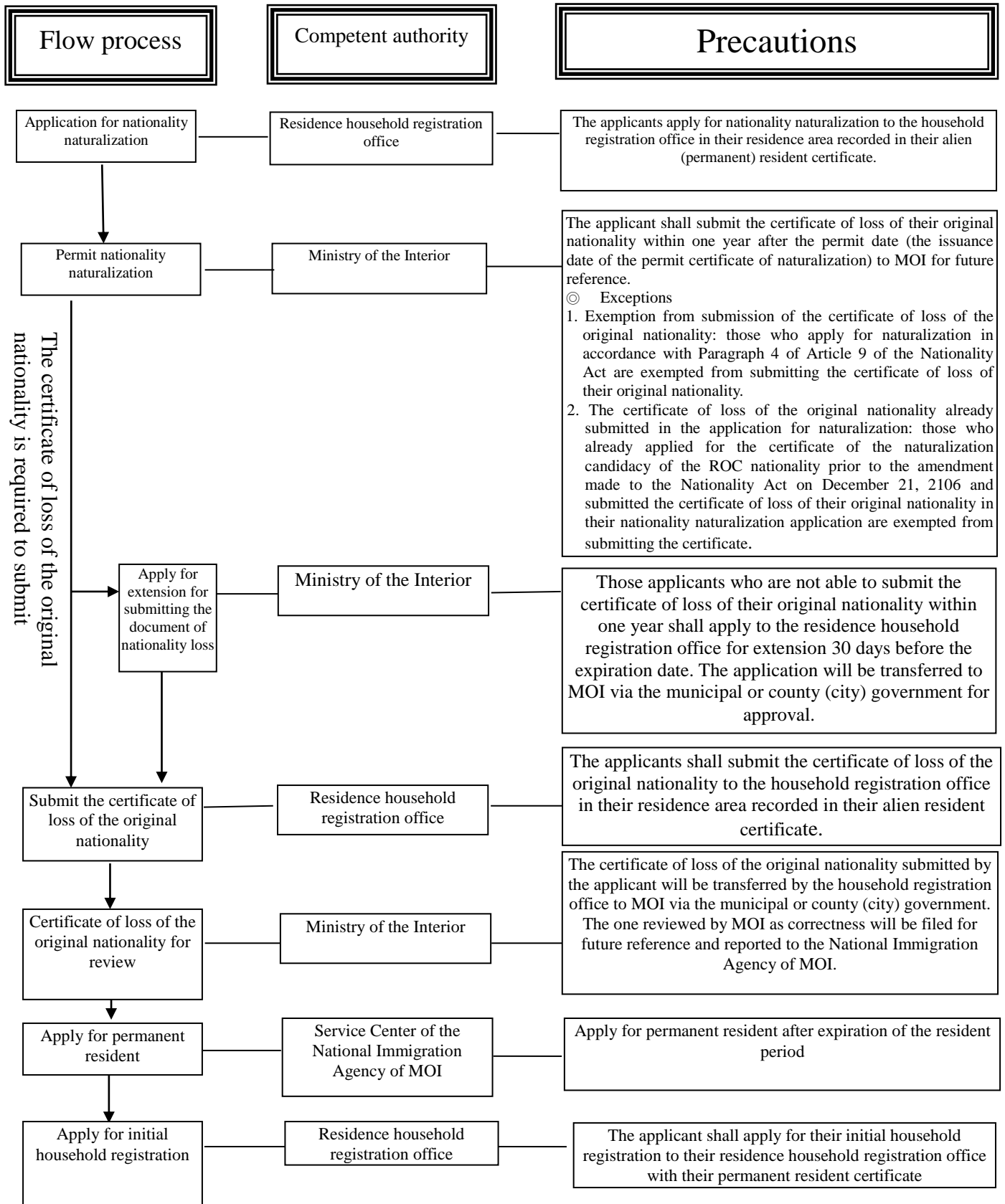


Flowchart for Naturalization Applicants to Submit the Certificates Proving the Loss of Their Original Nationality



Note: For the detailed process of respective stages from a foreigner's application for nationality naturalization to their initial household registration and the certificates required to submit, please refer to the "Flowchart for the Application for Naturalization in Marriages between Foreign Nationals and ROC Citizens and Household Registration" and the list of documents as required for the application for nationality naturalization on the website of the Dept. of Household Registration, MOI at <https://www.ris.gov.tw>.